

Our ref.: 5106-15/IPCC/AR5

Annex(es): 1

To designated IPCC Focal Points and
Ministries of Foreign Affairs (MFAs)
(if no focal point has been designated)

COPY

Geneva, 7 January 2015

Sir/Madam,

Allow me to bring to your attention an error found in the Summary for Policymakers (SPM) of the Working Group III (WGIII) Contribution that was imported into the Synthesis Report of the IPCC Fifth Assessment Report. This was discovered after approval of the SPM and adoption of the Longer Report of the Synthesis Report at the 40th Session of the IPCC in Copenhagen, October 2014.

The error, which requires correction, is explained in **Annex 1** to this letter.

Appendix A to the Principles Governing IPCC Work, ANNEX 3 - IPCC Protocol for addressing possible errors in the IPCC Assessment Reports, Synthesis Reports, Special Reports and Methodology Reports (referred to below as "Error Protocol"), lays down the procedures to address alleged errors in the SPM of a Working Group Contribution (see Error Protocol Section 2, Step 5A) as well as in the Synthesis Report (see Error Protocol Section 3, Step 5A). After agreeing that action on the alleged error is warranted, the Chairman of the IPCC, WGIII Co-Chairs and relevant authors have constructed an erratum statement. This erratum statement was approved by the WGIII Bureau for the WGIII SPM, and approved by the IPCC Bureau for the Synthesis Report.

The Error Protocol further stipulates: "Following WG or TF Bureau approval, the proposed erratum is submitted to the Panel for approval. To allow for rapid response, the Panel may delegate this approval step to the Executive Committee, which can decide that the erratum be posted on the IPCC and WG or TF websites, or can decide to defer to the next session of the IPCC Bureau or of the Panel."

The immediate correction of the error in the Synthesis Report and in the SPM of WGIII described in Annex 1 would be highly desirable in order for the revised SYR to be ready for timely print and distribution of the Synthesis Report. Consistent with the Error Protocol, it is suggested to use the option foreseen for rapid response and I kindly ask for agreement to delegate the approval of the proposed erratum to the IPCC Executive Committee.

Unless I hear any objections by **Tuesday 13 January 2015, 10.00 a.m.** CET Geneva time, we will proceed as suggested.

A copy of this letter is being sent for information to the Ministry of Foreign Affairs and to the Permanent Representatives from your country to the World Meteorological Organization (WMO) and to the United Nations Environment Programme (UNEP).

Yours sincerely,



(Renate Christ)
Secretary of the IPCC

IPCC Secretariat

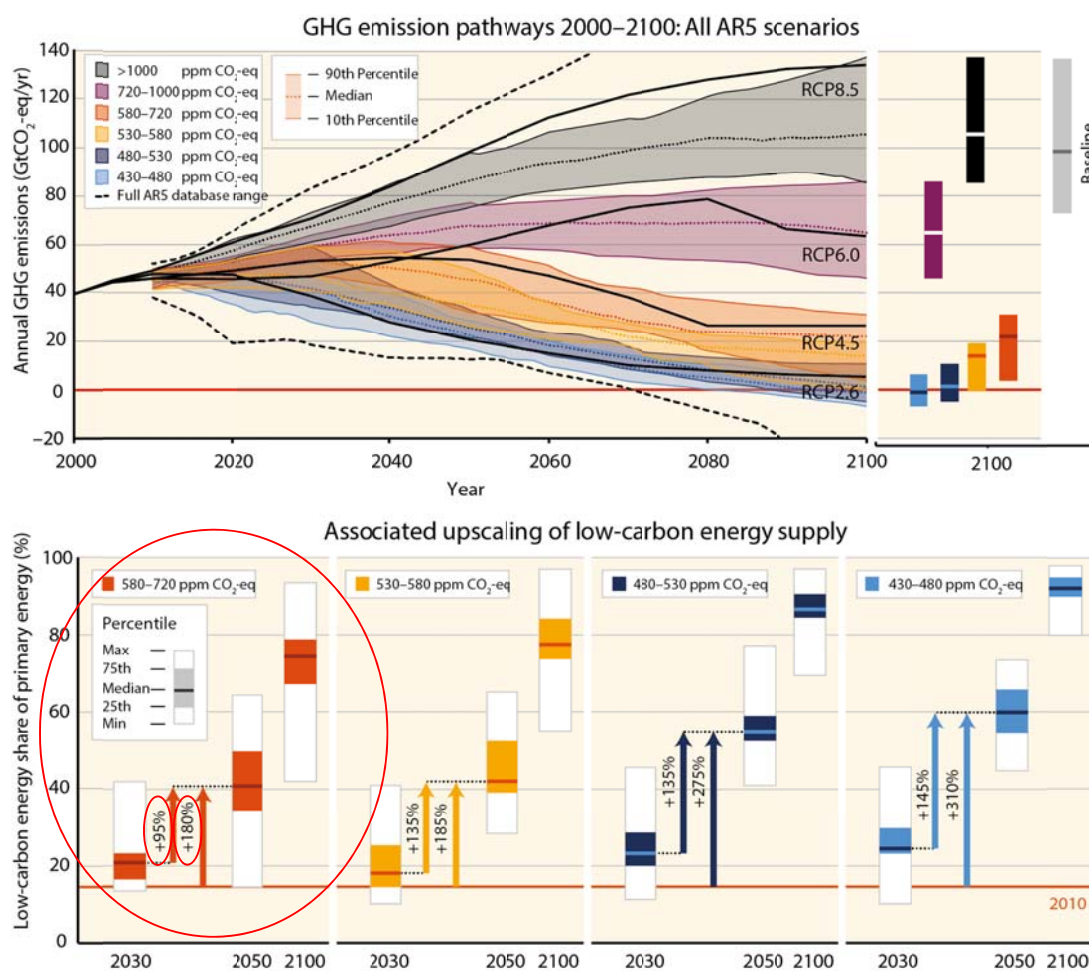
c/o WMO · 7 bis, Avenue de la Paix · C.P. 2300 · CH-1211 Geneva 2 · Switzerland
telephone +41 22 730 8208 / 54 / 84 · fax +41 22 730 8025 / 13 · email IPCC-Sec@wmo.int · www.ipcc.ch

ANNEX 1 : Erratum SYR Figures SPM.11 and 3.2 and WGIII Figure SPM.4

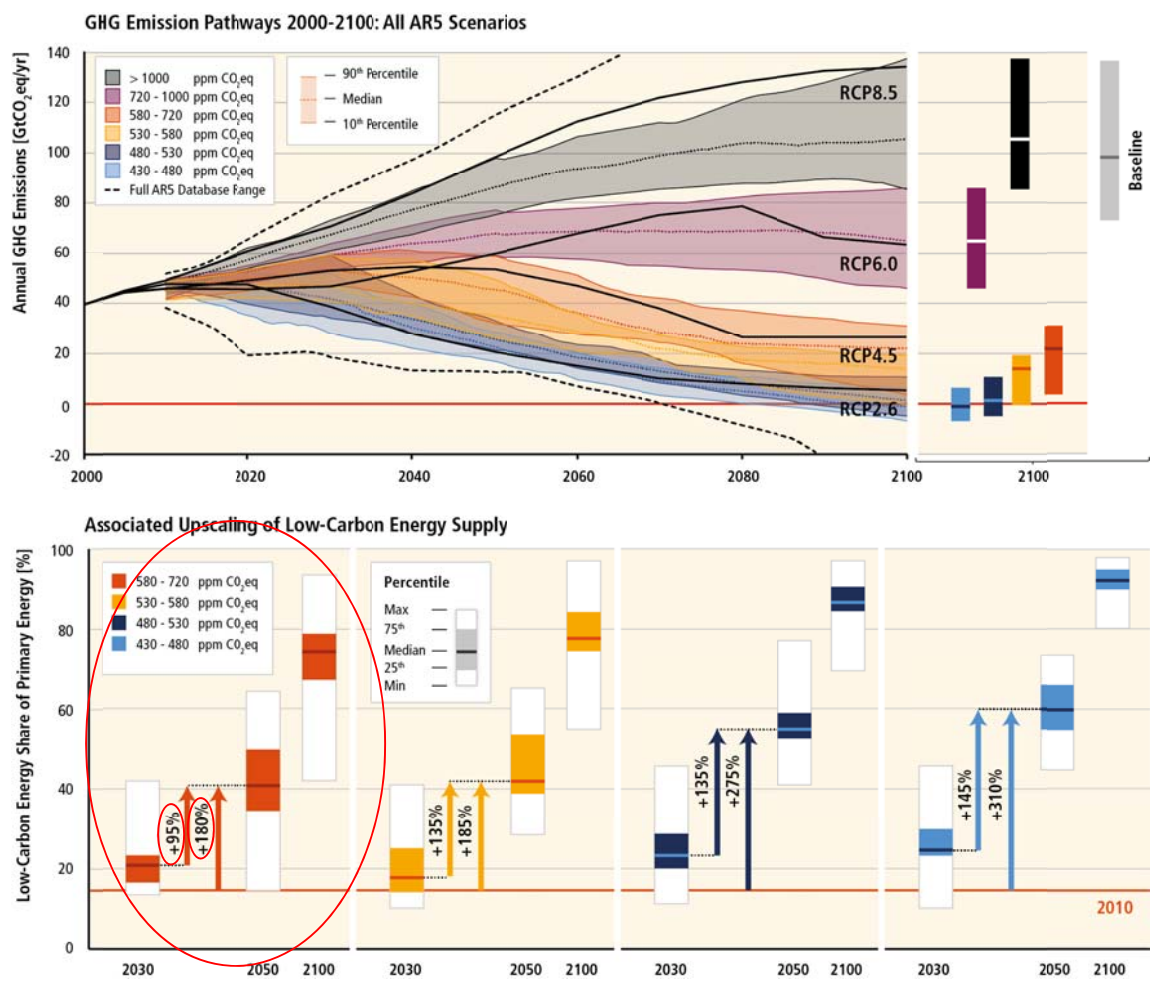
This erratum concerns the SYR figure SPM.11, the identical SYR figure 3.2 and the WGIII figure SPM.4. The SYR figures and the WG III figure are the same in their substance, except for some minor layout changes.

Data in the lower left panel of the figures were incorrect. All three orange bars for the 580-720 ppm CO₂eq category have to be slightly adjusted. The upscaling requirements next to the arrows were corrected from 105% to 95% for the period 2030-2050 and from 190% to 180% for the period 2010-2050. The corrected figures for SYR figure SPM.11/3.2 and WG III figure SPM.4 are shown below. The red circles in the corrected SYR and WGIII figures indicate where adjustments have taken place. The uncorrected figures are shown subsequently for comparative purposes. The captions are unaffected and remain unchanged.

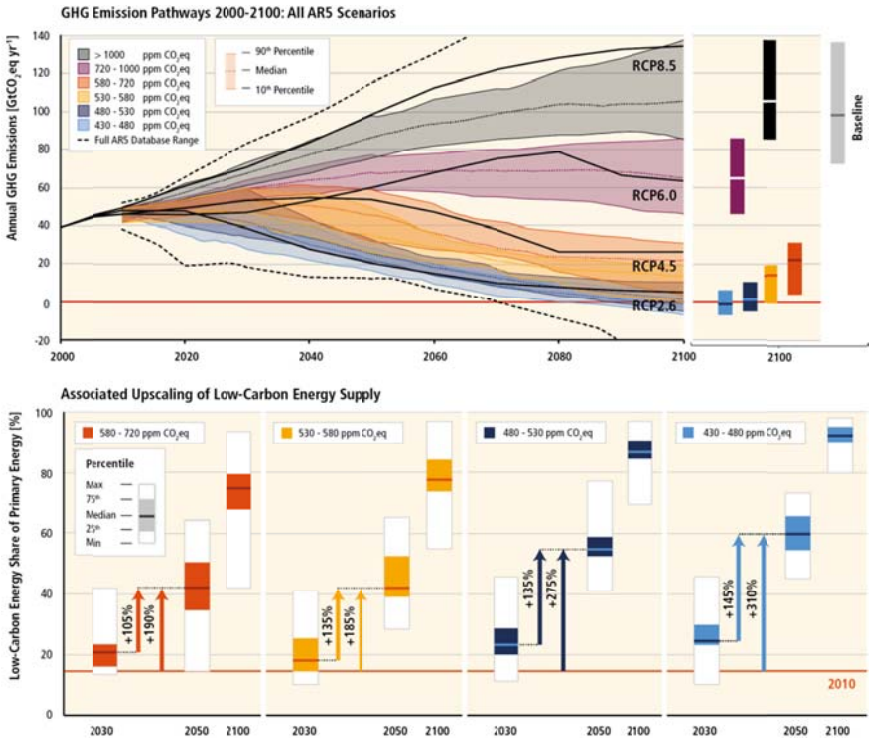
Corrected SYR figure SPM.11/3.2:



Corrected WG III figure SPM.4



Uncorrected SYR figure SPM.11/ Figure 3.2.



Uncorrected WG III figure SPM.4

