



Наш исх.: DRA/CPDB

ЖЕНЕВА, 17 июня 2016 г.

Приложение: 1 (имеется только на английском языке)

Вопрос: Запуск версии 2.0 Базы профильных данных ВМО по странам

Уважаемый господин/Уважаемая госпожа!

Я рад объявить о запуске версии 2.0 Базы профильных данных ВМО по странам (БПДС). В версии 2.0 был добавлен целый ряд новых функций, включая информацию об участии Членов в работе технических комиссий ВМО, а также информацию о региональных рабочих группах. Эти и другие усовершенствования описаны в информационном листке по БПДС версии 2.0 в приложении к настоящему письму.

Уверен, Вы найдете эту версию полезной, ожидая еще больших улучшений в будущем. Для поддержания полезности БПДС нам необходима Ваша помощь, чтобы убедиться в том, что информация, содержащаяся в БПДС, является точной. На сегодняшний день более 60 Членов назначили координаторов по БПДС и представили обновленные данные. Если Вы еще этого не сделали, то просьба уделить немного времени рассмотрению БПДС и назначению национального координатора по БПДС.

С уважением,

(П. Таалас)

Генеральный секретарь

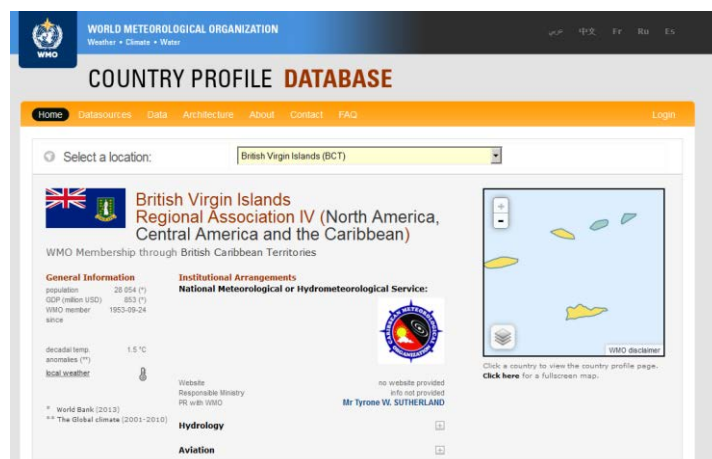
Постоянным представителям (или директорам метеорологических или гидрометеорологических служб) Членов ВМО (PR-6910)

Копии: Советникам по гидрологии при постоянных представителях)
Президентами региональных ассоциаций) (для информации)
Президентам технических комиссий)

Country Profile Database Factsheet v2.0 (June 2016)

1. New features the WMO Country Profile Database in version 2.0

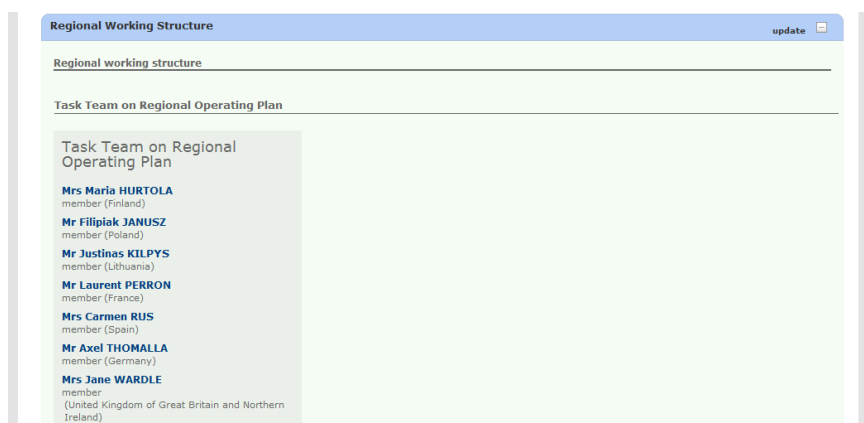
- 1) British Caribbean, Curacao and Sint Martin Territories
Enhanced representation of British Caribbean Territories, and Curacao and Sint Martin Territories within the collective Membership of WMO through British Caribbean Territories, and Curacao and Sint Martin have their individual profile pages instead of a single collective page.



Country Profile Page of British Virgin Islands.

The membership of WMO through British Caribbean Territories (BCT) is indicated underneath the flag. Having individual profile pages for BCT members allows for more precise monitoring of information.

- 2) Regional Working Structure
The regional working structure and the designated experts within the subsidiary bodies of Regional Associations are shown in all the country profile pages and in the regional view.



A new widget "Regional Working Structure" in the profile page shows experts from this country working in regional working groups. The same information is also available as a regional view, accessible when selecting a Region from the dropdown.

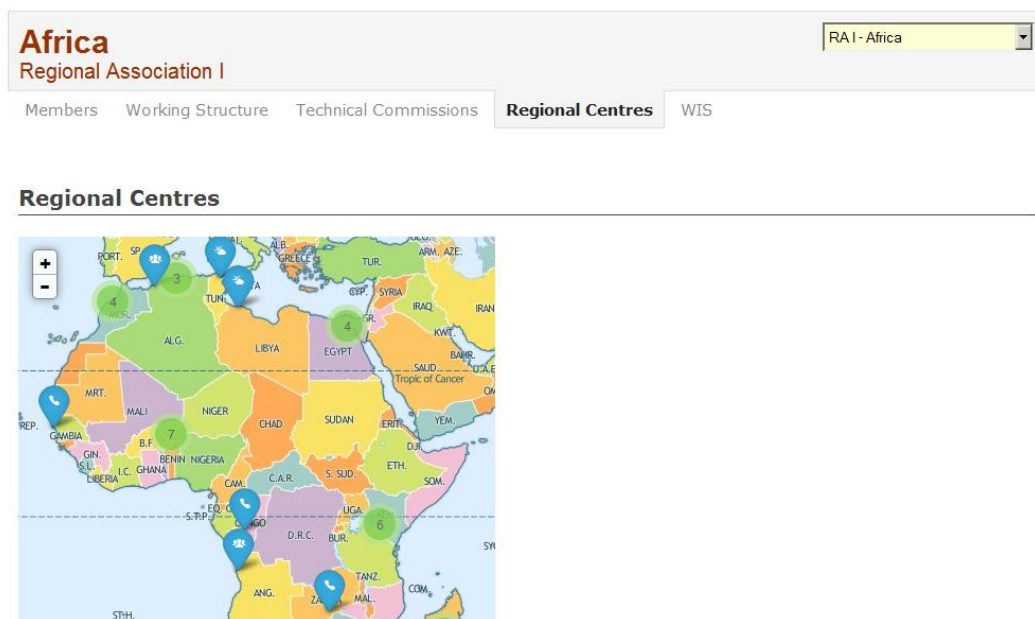
- 3) Complete and consolidated membership of Technical Commissions
The membership of all Technical Commissions are shown together in a single widget by country and by Region.

Technical Commissions								update
CBS	CIMO	CHy	CAS	CAeM	CAGM	JCOMM	CCI	
Commission for Basic Systems								
Name	Workgroups							
Mr ZINKHAN Dirk	IPET-DRMM Task Team on Aviation Coding Issues Inter-Programme Expert Team on Metadata and Data Representation Development - Task Team on Aviation XML							
Mr MARZ Rainer	National Focal Points on Matters Related to the Regional Basic Synoptic Network (RBSN) National Focal Point on Matters Related to Weather Pub. No. 9, Volume A (Observing Stations) Inter-Programme Expert Team on WIGOS Framework Implementation Matters National Focal Points for OSCAR/Surface							
Mr SCHNEIDER Udo	National Focal Points on Matters Related to Global Climate Observing System (GCOS) and related Climatological matters (RBCN)							
Ms DIESNER Carmen	National Focal Point for Weather Radar Metadata							
Dr ASENSIO Hermann	Focal Points for WIS Metadata matters Inter-Programme Expert Team on Metadata and Data Representation Development Inter-Programme Expert Team on Metadata and Data Representation Development IPET-MDRD Task Team on Metadata Implementation Working Group on Technological Development and Implementation (RA_VI)							
Mr HUBERSON Albert	Expert Team on Satellite Systems							

Membership of all WMO Technical Commissions are shown in a single widget "Technical Commissions". Technical Commissions with no expert from the country are greyed out.

4) Enhanced Regional Views

The regional views have been extended by including the regional working structure and enhanced by a more common layout and the addition of maps.



A map accompanies most regional views. The new regional view "Regional Working Structure" can be accessed when selecting a WMO Region and then choosing from the five available regional views.

5) Additional National Focal Points

New National Focal Points are shown in the Focal Points widget of the country profile. Focal Points for DRR, OSCAR, Information and Public Affairs, various JCOMM-related activities and Education and Training have been added. This information is available as a per country view and also by Region.

Severe Weather Forecasting Demonstration Project		
no Focal Point nominated		
WIGOS		
no Focal Point nominated		
Matters Related to Global Climate Observing System (GCOS) and related Climatological matters (RBCN)		
Name	Country	Role
Mr HASEGAWA Naoyuki	Japan	focal-point
Matters Related to the Regional Basic Synoptic Network (RBSN)		
Name	Country	Role
Mr KIMURA Tatsuya	Japan	focal-point
Implementation Plan for the Evolution of the Global Observing System (EGOS-IP)		
Name	Country	Role
Mr KIMATA Yoshihisa	Japan	focal-point
WIS matters		
Name	Country	Role
Mr TSUNODA Kenji	Japan	focal-point
Mr OHNO Yoritugi	Japan	focal-point-second

National Focal Points for WMO activities are shown in the country dashboard. The system indicates if no Focal Point has been nominated.

2. Introduction to WMO Country Profile Database (CPDB)

The WMO Country Profile Database (CPDB), accessible at <http://www.wmo.int/cpdb/>, is a WMO portal that contains information about WMO Members available at the WMO Secretariat. It provides geographical/organizational information (e.g., WMO Pub 5 – Permanent Representatives), institutional information (e.g., questionnaire survey results), programmatic and technical information (e.g., national observation network), information on capacity building (e.g., training, modernization projects), and information on monitoring and evaluation (e.g., WIS operational statistics) consolidating various data-sources available at the WMO Secretariat.

The portal consists of a profile page for each WMO Member and regional views of some information (e.g., regional WMO centres, Technical Commissions). The portal also provides information on how to update the information that is shown.

WORLD METEOROLOGICAL ORGANIZATION
Weather • Climate • Water

COUNTRY PROFILE DATABASE

Select a location:

Albania
Regional Association VI (Europe)

General Information
 population 2 773 620 (*)
 GDP (million USD) 12 923 (*)
 WMO Member since 1957-07-29
 decadal temp. anomalies (**) no value reported
 local weather

Institutional Arrangements
National Meteorological or Hydrometeorological Service:
 The Hydrometeorological Institute
 Website no website provided
 Responsible Ministry Ministry Education and Sciences of - UPT
 PR with WMO Assoc. Prof. Fatos HOXHAI

Hydrology
Aviation

* World Bank (2013)
 ** The Global climate (2001-2010)

Institutional information

Composition of the WMO (PUB5)	update
Institutional Information	update
Regional subsidiary bodies	update No data available
Technical Commissions	update
Focal Points	

Click a country to view the country profile page.
 Click here for a fullscreen map.

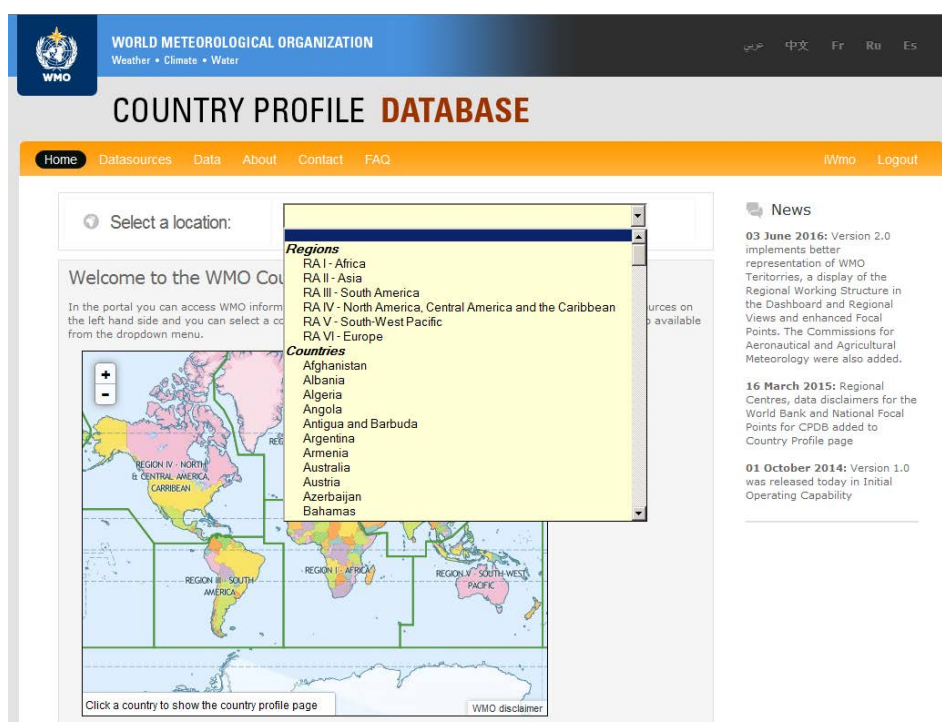
Country Dashboard of Albania. Blue data source tabs can be expanded by clicking on them. Data source tabs are gray and disabled when there is no information for this Member.

3. Current capabilities

The Initial Operating Capability (IOC) of the CPDB was released in October 2014, following a request from EC-64 (2012), and consists of the following three features.

Country Profile Page for each WMO Member

Every profile page has the same structure. On top, it shows basic country information and a map. Underneath the basic information there are information windows of four categories: Institutional Information, Observations, Country Information and Cooperation. Table 1 shows an overview of the information available on all profile pages. The profile page for a country can be reached by clicking once on the country in the map on the startpage, or by selecting it from the drop-down list of countries and Regions.



Startpage of Country Profile Database portal. Country pages can be accessed by clicking on the map or selecting a country from the list.

Institutional information	Observations	Country information	Cooperation
<ul style="list-style-type: none"> Composition of WMO (Pub5) Institutional Information Roles and Operations Experts working in WMO Technical Commissions List of National Focal Points 	<ul style="list-style-type: none"> Surface and upper-air stations Catalogue of Meteorological Bulletins Weather Radars Global Atmosphere Watch (GAW) 	<ul style="list-style-type: none"> WMO Information System (WIS and GTS) Hydrological Information (INFOHYDRO) WMO Library Climate Normals Alerting Authorities (CAP) 	<ul style="list-style-type: none"> Voluntary Cooperation Programme (VCP) Fellowships GFCS Projects Projects

Table 1: Country Profile Page information windows.

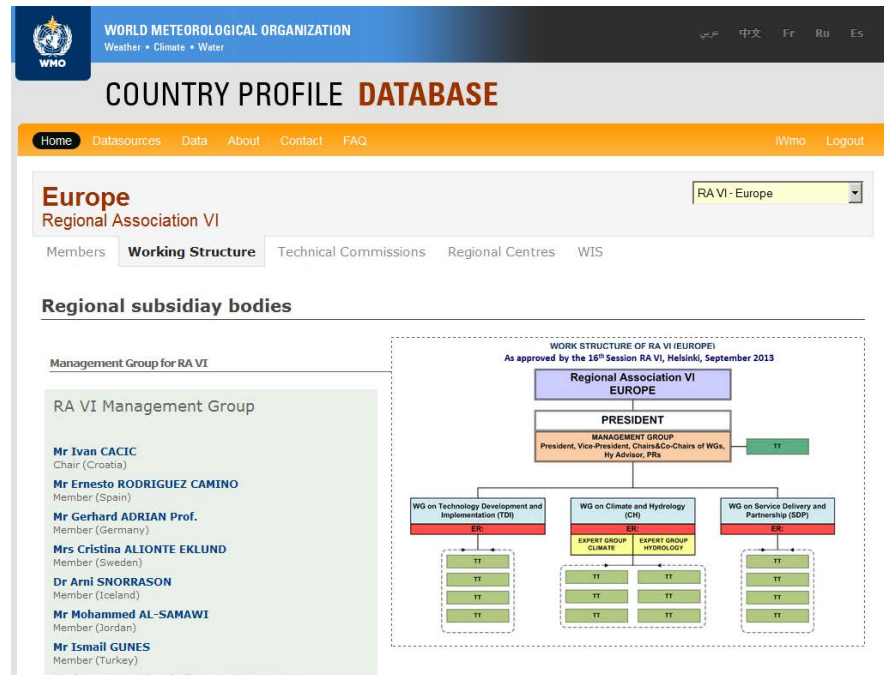
The data in the "Institutional Information" window is based on the Regional Surveys. From 2014 on, all Regional Surveys will use the same set of questions and can be updated in the CPDB portal.

Regional Views

The portal also shows information on a regional basis. The regional views can be accessed by first selecting one of the six WMO Regions from the list on top and then choosing one of the four regional views: Countries, Commissions, Regional Centres and WIS.

- The countries view shows a list of countries in the selected Region.
- The Commissions view gives an overview of the WMO experts from the selected Region and in which WMO Technical Commissions they work.
- The regional centres view shows official WMO centres of the selected Region by country.
- The WIS view shows information about the WMO Information System implementation status of countries in the selected Region.

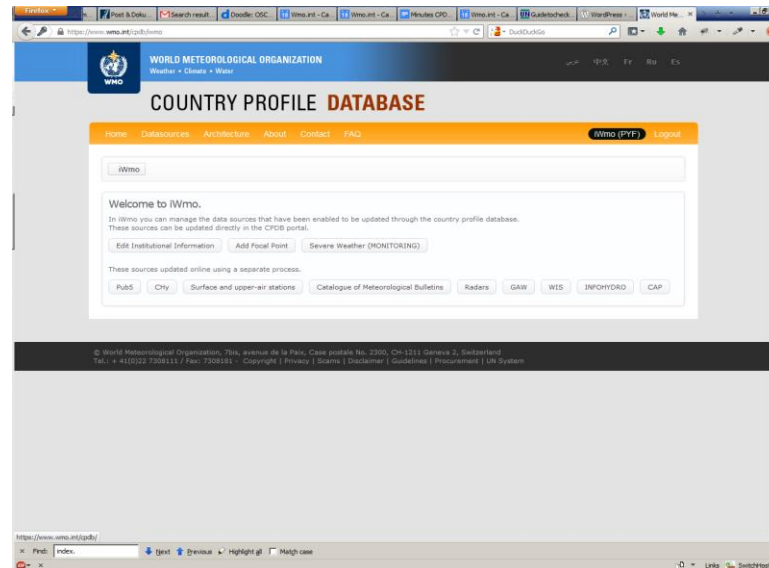
- The working structure view shows experts working in the selected Region.



Regional view of the Working Structure in Europe.

Login mechanism

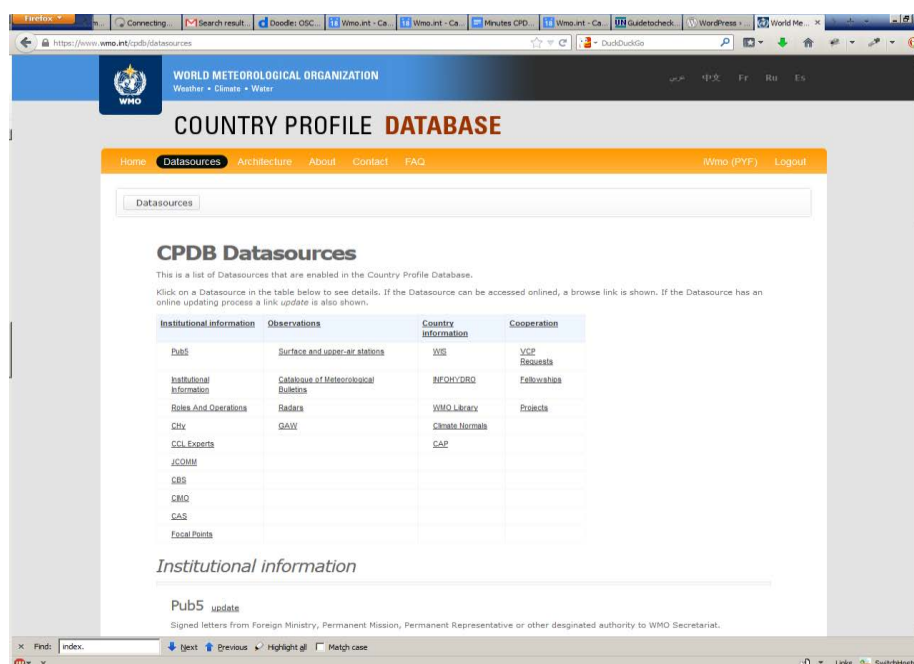
The Permanent Representative of a WMO Member has the possibility to log into the portal and change selected information. More information on updating data can be found in the section "Updating of information" below.



iWMO login screen for logged on user, showing information that can be updated.

4. Updating of information

Depending on the kind of information in the CPDB, a different update processes must be used to communicate changes to the WMO Secretariat. The portal contains an accurate description of these update processes and, where applicable, a direct link to an online form allowing to update the information.



Information on how to update different kinds of information

5. Logon to iWMO

All Permanent Representatives with an email address in PUB5 can log on to the CPDB portal. To do this, they need to click on the "logon" button at the top right and then either select the ISO3 country code of their country, or select the country name from the dropdown box below and input the password.

If the password is not known, it can be reset. To reset the password, they need to click on "forgot password" and enter the ISO3 country code again. A link with password change instructions will then be sent to the e-mail address of the PR as stored in PUB5. The process of logging on is also described in the FAQ (<https://www.wmo.int/cpdb/faq>).

6. User support

Service Desk

A service desk has been established at the WMO Secretariat to assist Members with questions on the CPDB. It can be reached at cpdb@wmo.int. This e-mail address is the single source of support for operational matters of the CPDB and all questions from inside and outside the WMO Secretariat should be directed to this e-mail address. The service desk will either directly answer the question, after consultation with Technical Departments or Regional Offices of the Secretariat, as necessary.

Frequently Asked Questions (FAQ)

The CPDB has a Frequently Asked Questions (FAQ) section, which has a collection of commonly asked questions, accessible at <https://www.wmo.int/cpdb/faq>. The FAQ can be a first point of reference for Members asking about the CPDB.

7. Timelines and Future Development

Following the mandate from the Fifteenth Congress (Cg-XV) held in 2007, the Country Profile Database has been developed as a multi-phased approach under the guidance of the Development and Regional Activities (DRA) Department in cooperation with the Observing and Information Systems (OBS) Department.

The Initial Operating Capability (IOC) was released in September 2014, following a request from EC-64 (2014). This concluded phase I of the project.

Future development in phases II and III of the CPDB will further integrate the CPDB into the WMO IT architecture with a view to facilitating self-management of information by Members, implement archiving of information to provide monitoring of development status and add additional information to country profile pages and regional views.

Phase I

- 2007: Cg-XV urged the implementation of CPDB to gather/share information and optimize surveys with the Initial mandate for the Country Profile Database as given by Cg XV:
- Gather the information collected by individual WMO Programmes and Departments,
 - Optimize the number of questionnaires sent to Members,
 - Track the needs for assistance and development of the NMHSs to better target development resources and in applying for additional resources,
 - Ensure Members have access to the information contained in the database, especially with regard to their own country and NMHS.
- 2009/10: Task Team created which elaborated requirements, built business case, established principles, created parallel sub groups.
- 2011: DRA & OBS initiated collaboration on prototype CPDB Portal. Cg-XVI was briefed on CPDB architecture and development. Cg-XVI added update mechanism as a deliverable.
- 2012: EC-64 received demonstration of working prototype.
- 2013: Pre-operational mode was started following ECWG-CD Task Team testing and review.
- 2014: EC-66 requested the CPDB Initial Operating Capability (IOC) be launched, which concluded Phase I of the development.

Phase II (2015-2016)

- 2015/Q1: Launch of CPDB v1.0 in Initial Operating Capability.
- 2016/Q2: Launch of CPDB v2.0 with new functionality.
(v2.0 is the last major release using the initial technology platform, concluding Phase II)

Phase III (2016-2017)

- 2016/17: CPDB v2.5: Integration with new WMO Community Platform (Extra-Net) architecture.
- 2017: CPDB v3.0: Monitoring and tracking of CPDB related information. Greater user features and better update mechanisms.
-